

Bergnäsälven- Förbättrad fiskvandring via ytspill?

Better fish migration due to surface spill?

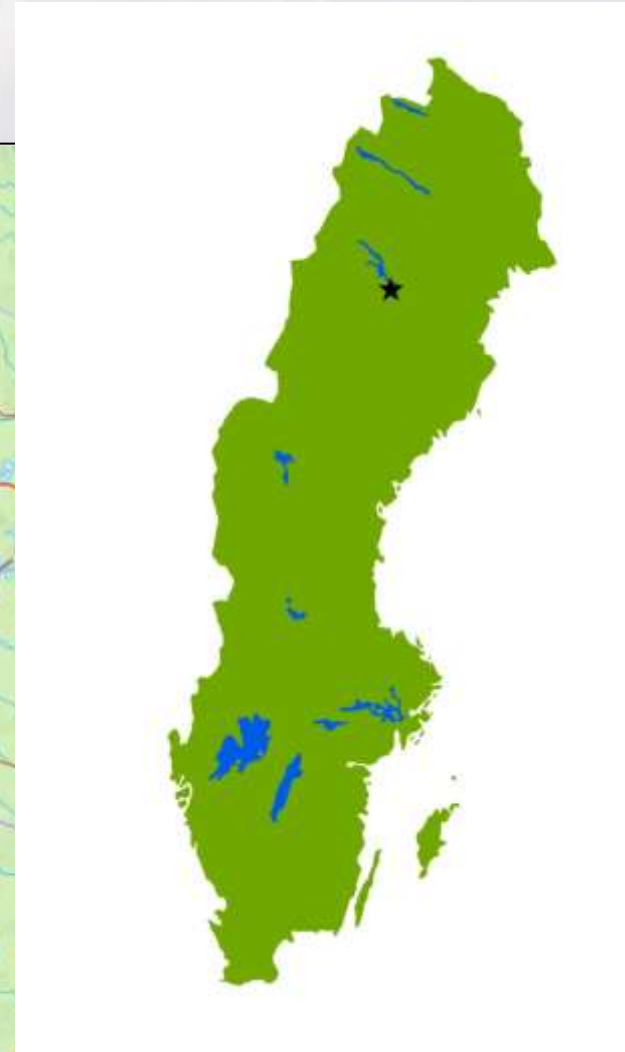
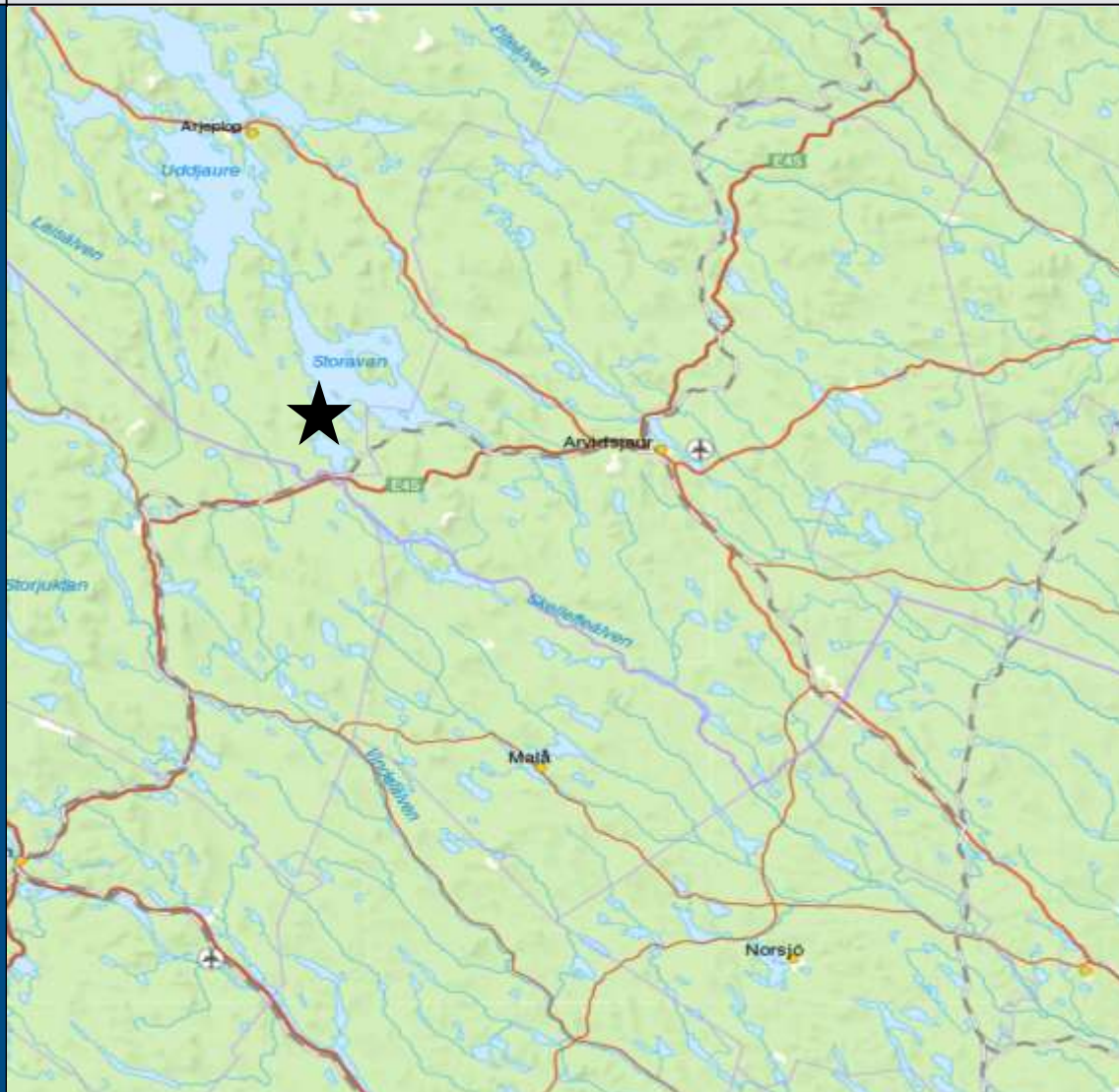
**Fiskmarknad 2016 Luleå
23-25 augusti**

**Minna Brodin, Fiskeutredningsgruppen
Länsstyrelsen Norrbotten**



Länsstyrelsen
Norrbotten

Bergnäsälven



Bergnäsöringen

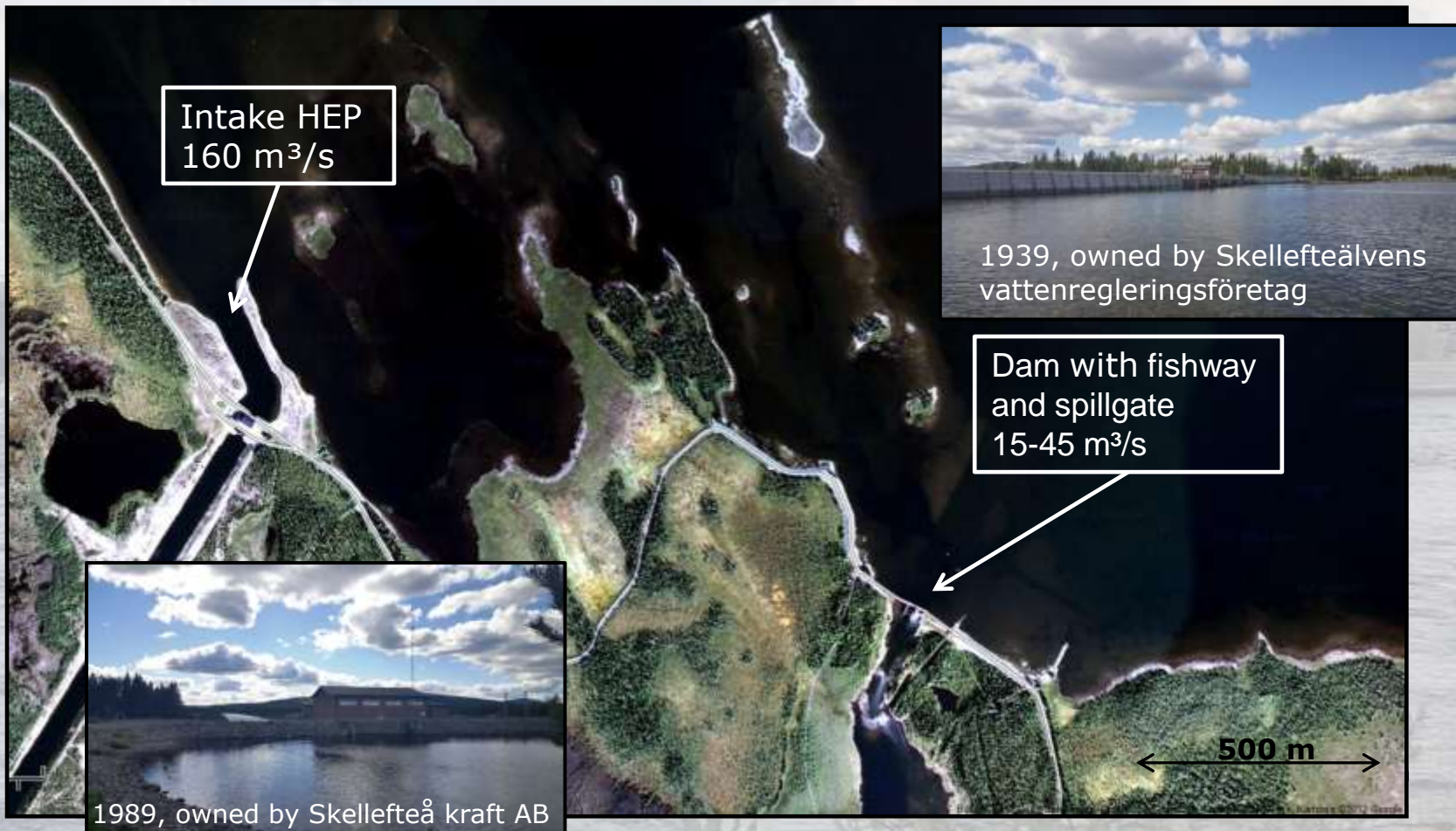
- Down stream spawning
- Grow fast to large size
- Main food source is whitefish



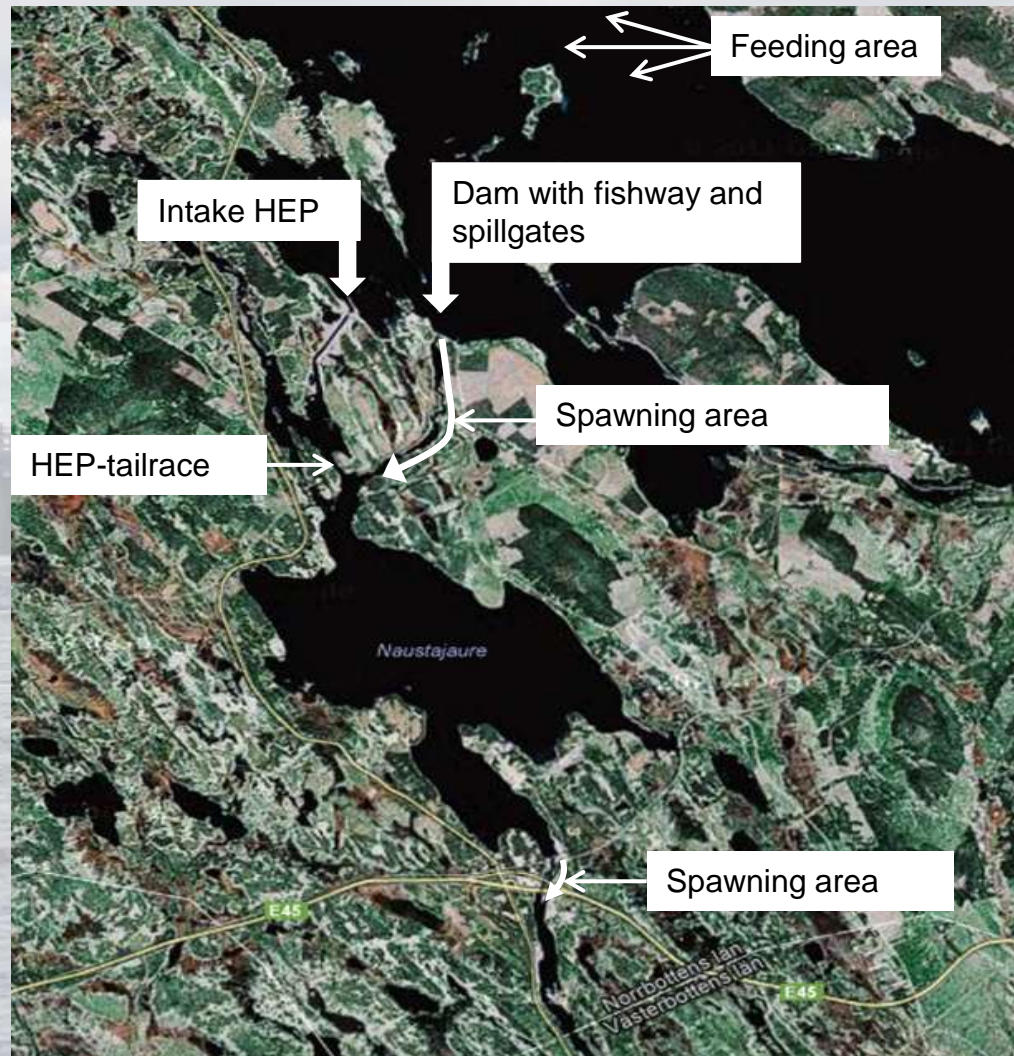
Foton: Fredrik Lestander



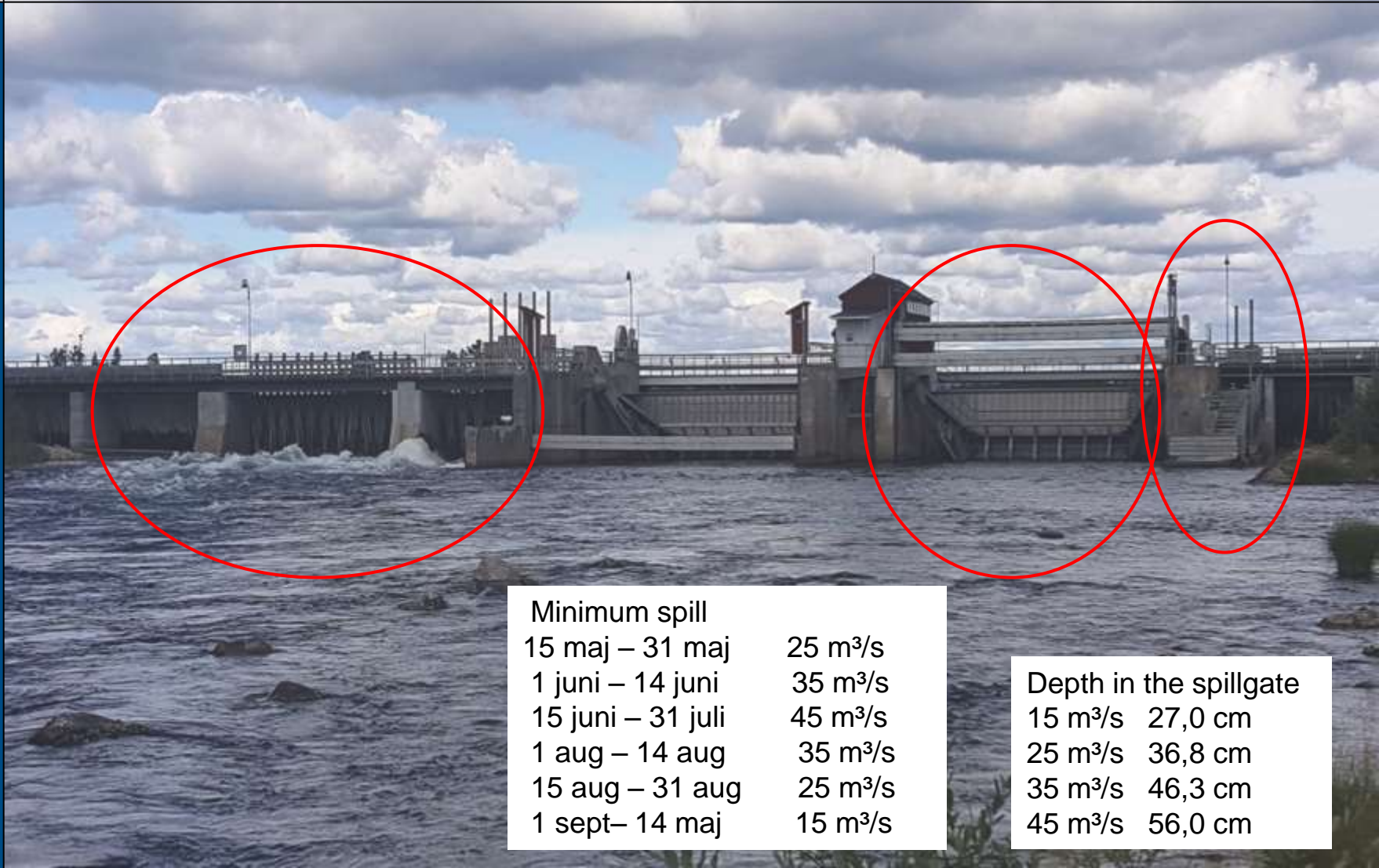
Bergnäsälven- HEP



Bergnäsöringen- migration



Bergnäsälven- background



Minimum spill

15 maj – 31 maj	25 m ³ /s
1 juni – 14 juni	35 m ³ /s
15 juni – 31 juli	45 m ³ /s
1 aug – 14 aug	35 m ³ /s
15 aug – 31 aug	25 m ³ /s
1 sept– 14 maj	15 m ³ /s

Depth in the spillgate

15 m ³ /s	27,0 cm
25 m ³ /s	36,8 cm
35 m ³ /s	46,3 cm
45 m ³ /s	56,0 cm

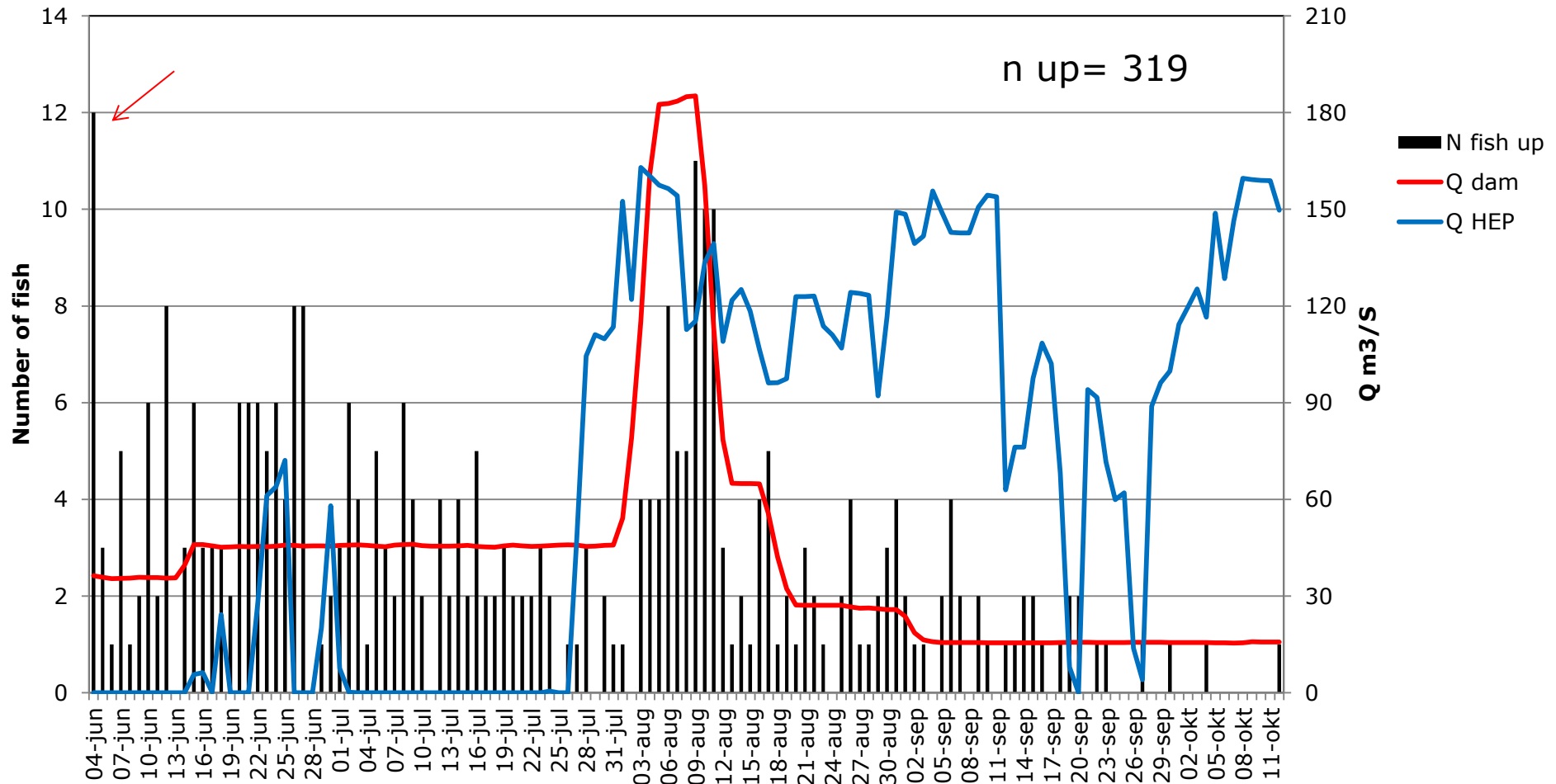


Riverwatcher, VAKI

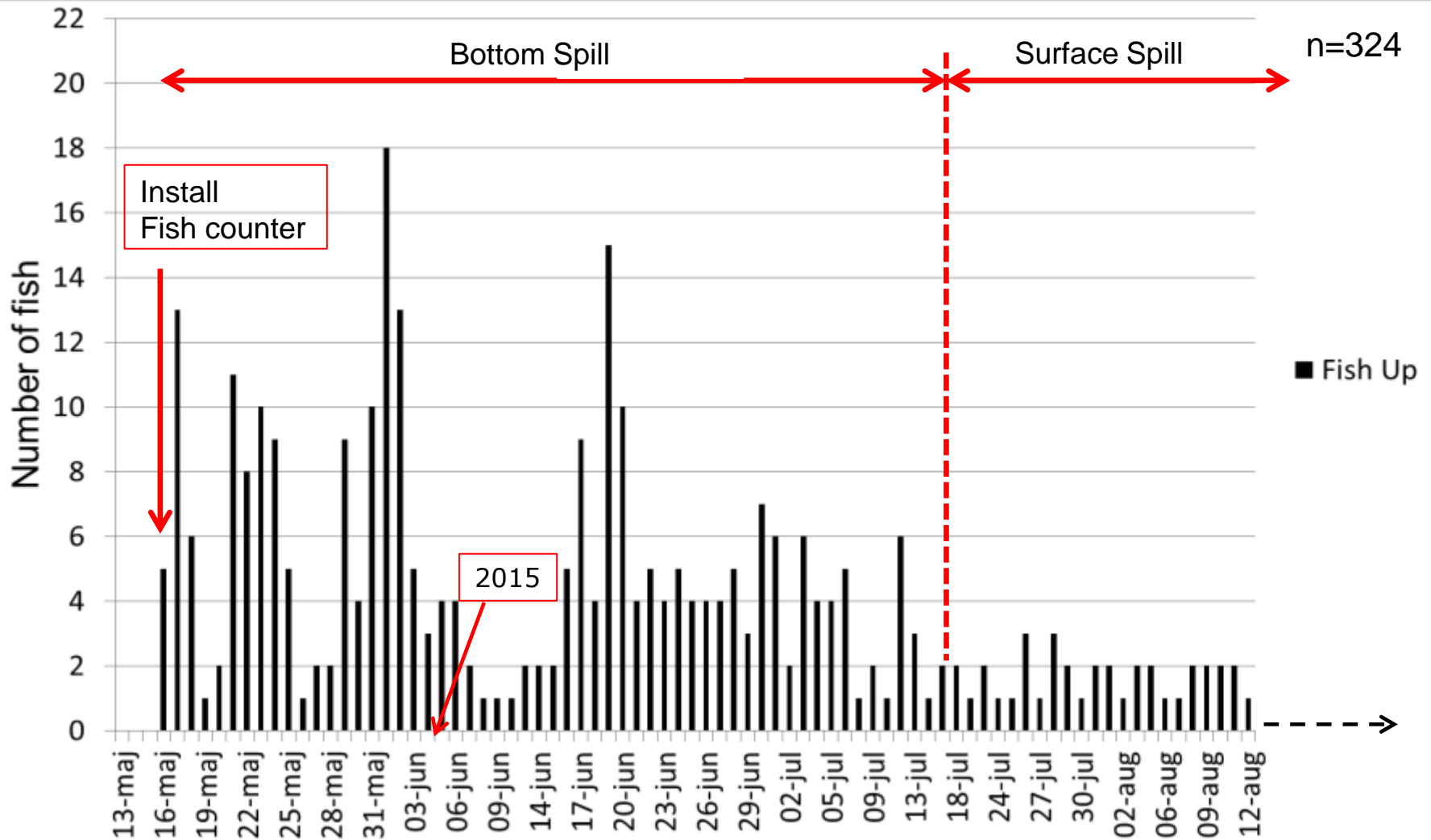


Ultrasound camera, Simsonar

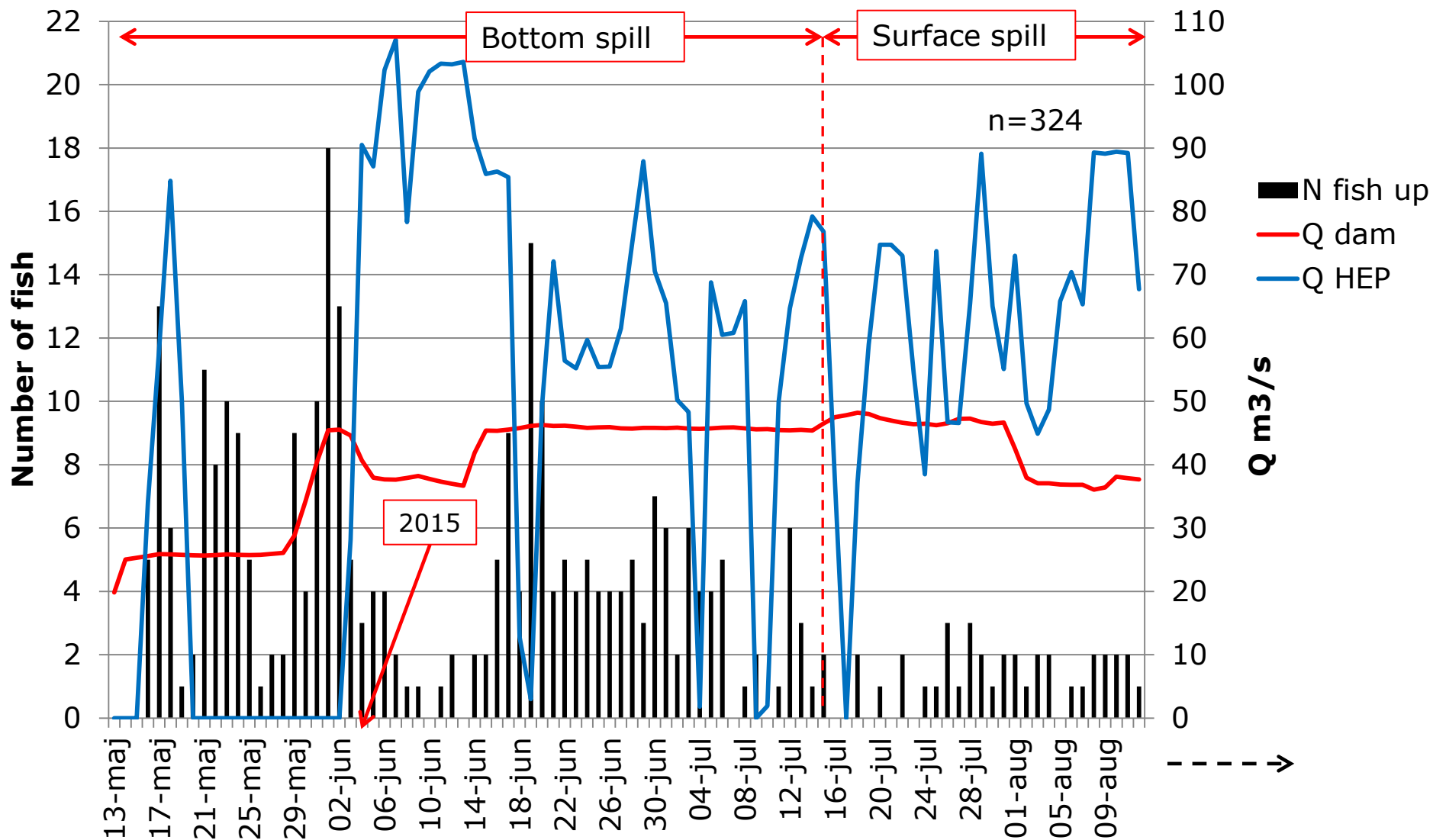
Results 2015- fishway



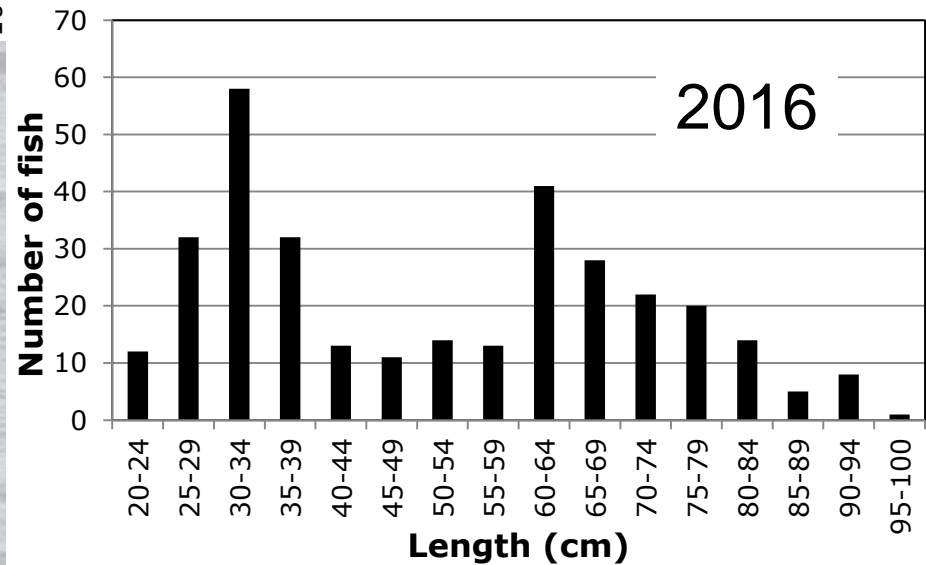
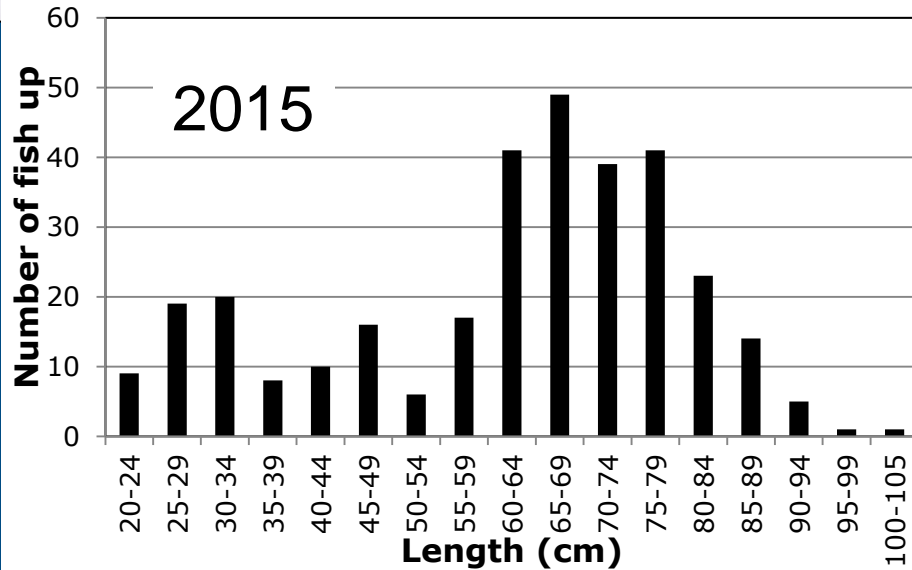
Results 2016- fishway



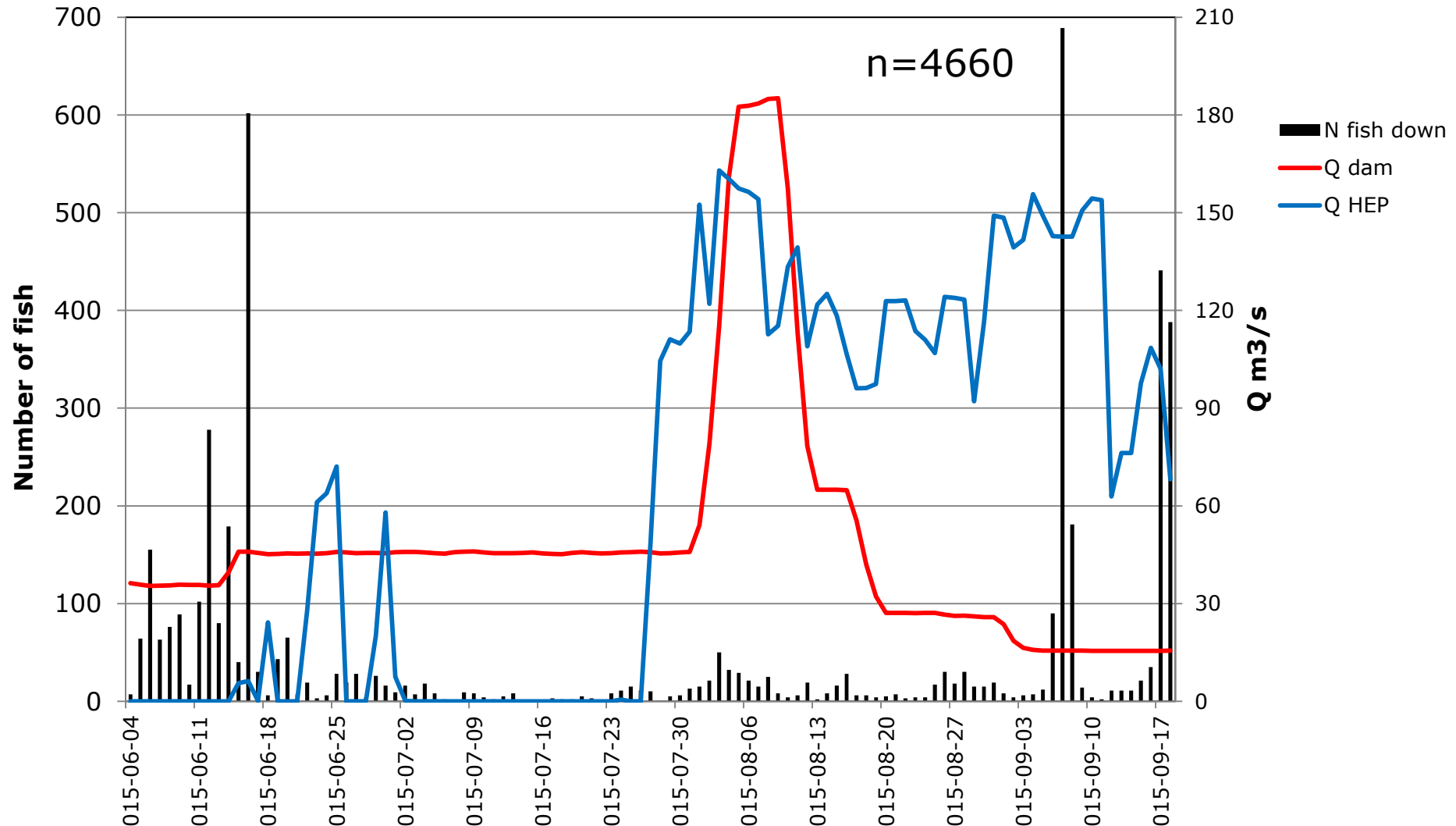
Results 2016- fishway



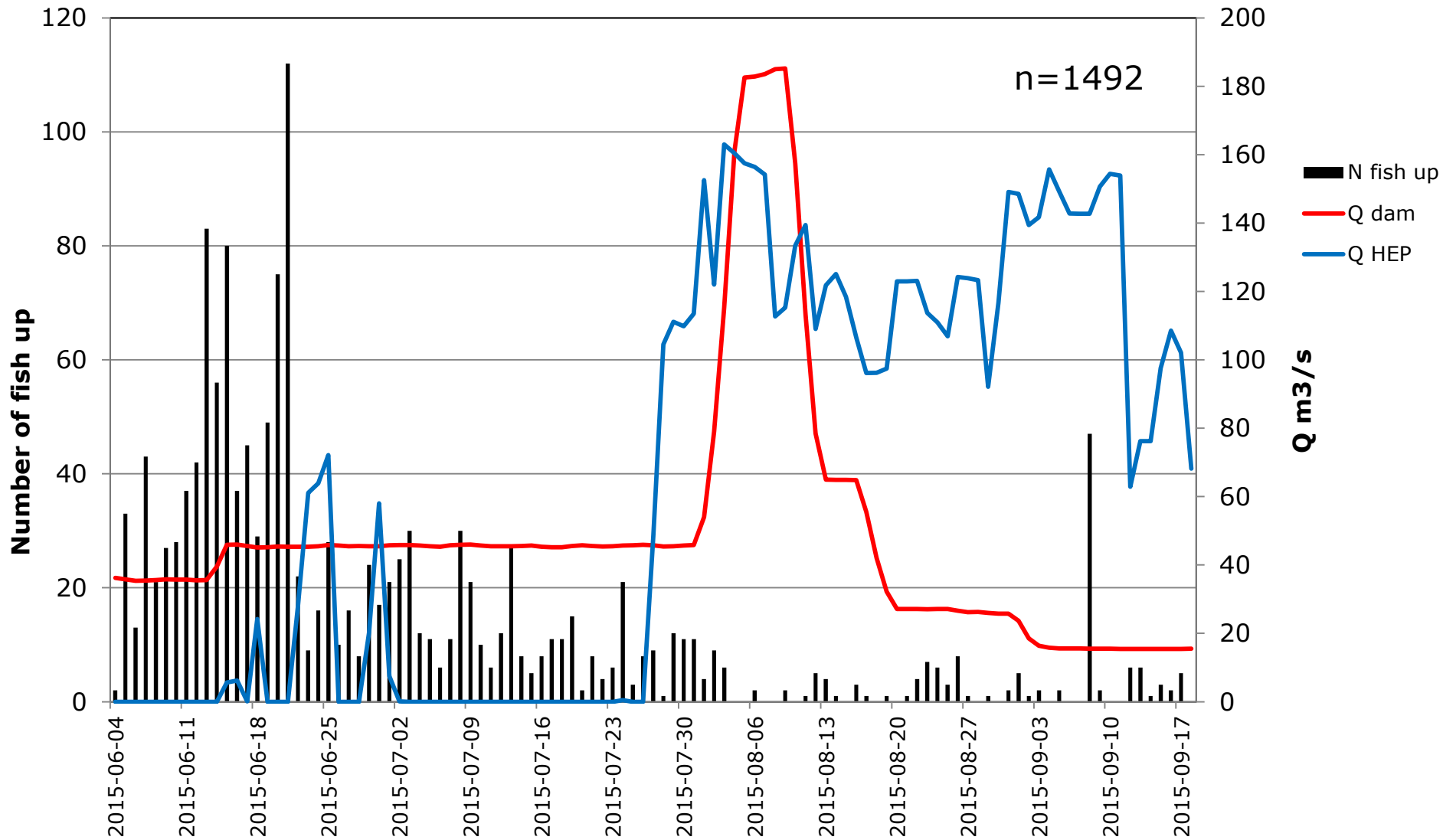
Results fishway, length



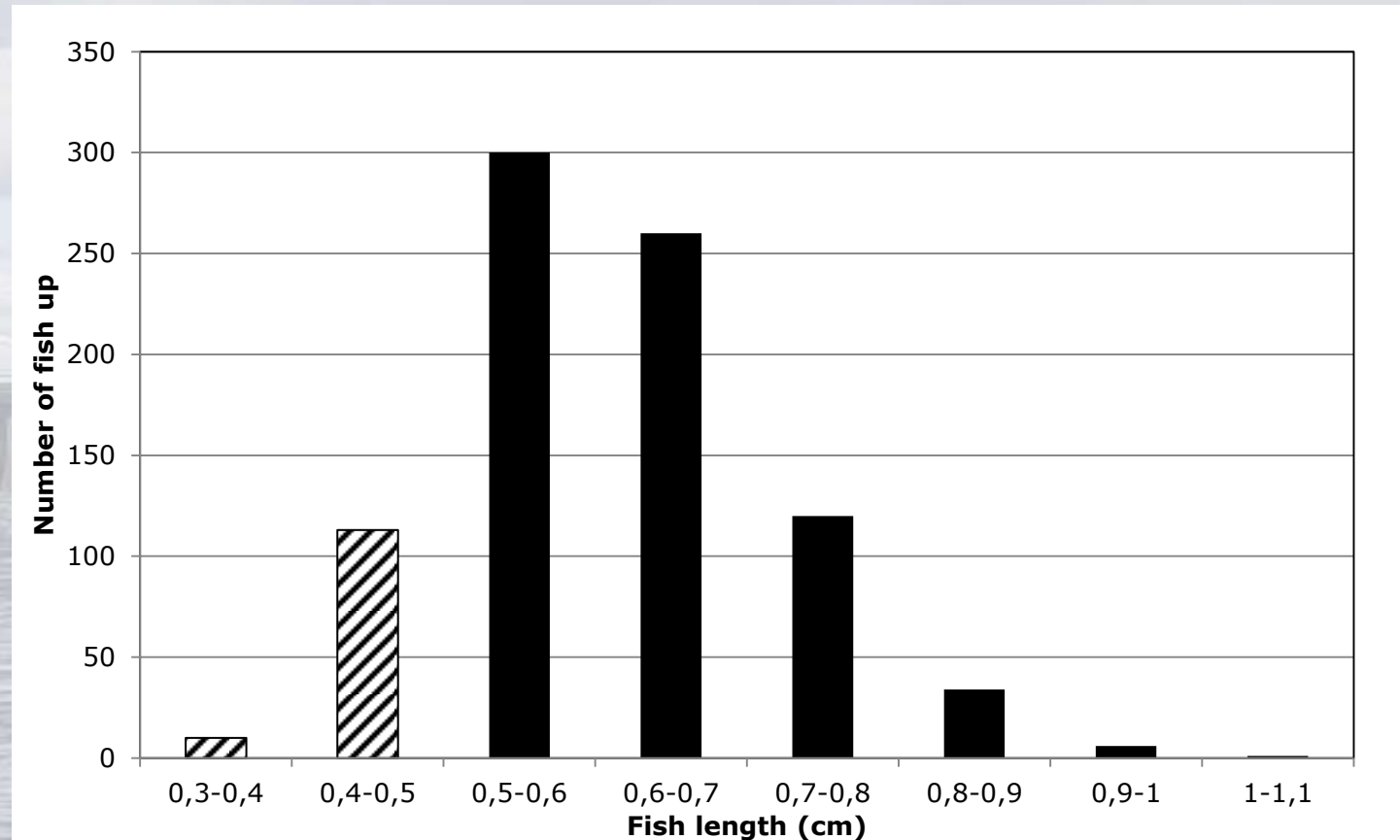
Results 2015, spillgate- down



Results 2015, spillgate- up

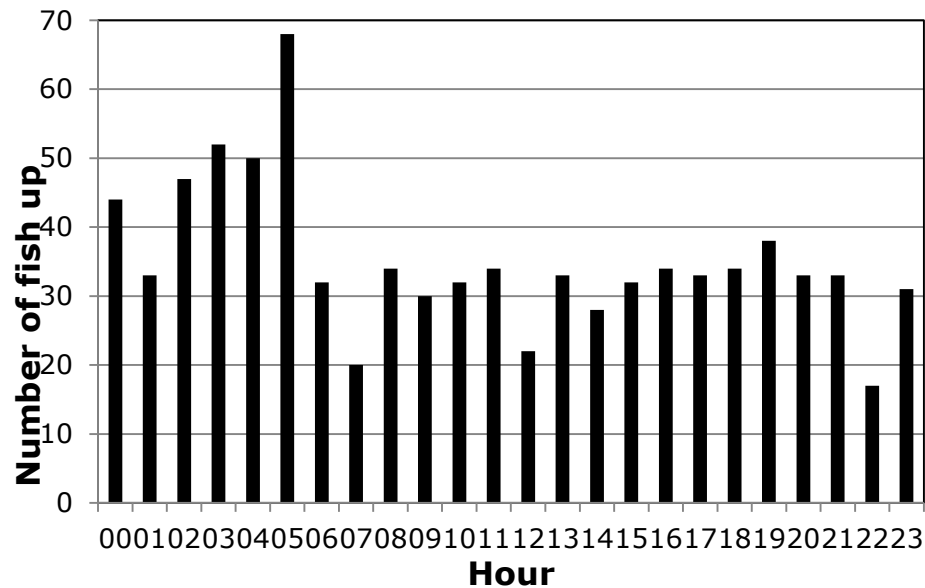


Results 2015- spillgate up, length

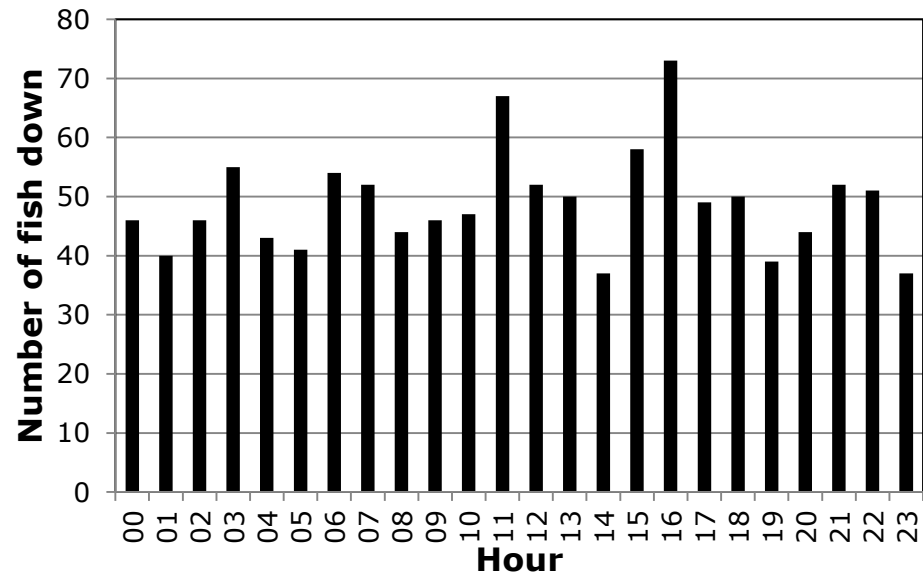


Results 2015- spillgate, migration during the day

Up



Down



Bergnäsälven- the future?

**Surface spill- new fishway
15-45 m³/s
Both up and dow**



Bergnäsälven- the future?



Thanks!



Länsstyrelsen
Norrbotten